



'22-'23 Special Education

BOE Presentation

Presented By: Lynn Hewitt - Director of
Special Education and Grant Writing
March 2023



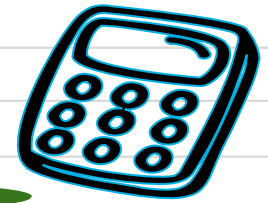
Lewiston Porter Central School District Special Education Programs and Staff

- **Programs:** Consultant Teacher (CT), Integrated Co-Teaching, 15:1 Math, and 12:1+1
- **Total Students with IEPs:** 360
- **Total Students within District with IEPs:** 319
- **Staff:**
 - 29 Special Education Teachers
 - 5 School Counselors
 - 3 School Psychologist
 - 4 School Social Worker
 - 4 Speech/Language Pathologist
 - 1 Physical Therapist
 - 2 Occupational Therapist
- **Average Special Education Teacher to Student Ratio:** 1:11

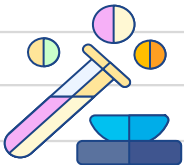




Lewiston Porter High School Special Education Programs and Staff



- **Programs:** Consultant Teacher (CT) and 12:1+1
- **Students with IEPs:** 98
- **Staff:**
 - 9 Special Education Teachers
 - 3 School Counselors
 - 0.7 School Psychologist
 - 1.0 School Social Worker (29 Students)
 - 0.8 Speech/Language Pathologist (22 Students)
 - 0.03 Physical Therapist (1 Student)
 - 0.03 Occupational Therapist (1 Student)
- **Changes in Special Education for '23-'24**
 - CT services at the HS will be scheduled more efficiently. One section of CT in each core subject (ELA, Social, Science, and Math) will be offered at each grade level (consistent with graduation requirements). In addition, Study Skills will be scheduled more strategically so that there are not only 2-3 students in some sections. These changes will result in the need for 1 less special education teacher at the HS.
 - Decrease SLP to 0.25 based on student needs and to balance SLP caseloads across the district





Lewiston Porter Middle School

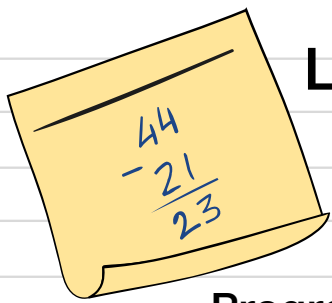
Special Education Programs and Staff



- **Programs:** Consultant Teacher (CT), 15:1 Math (6th) and 12:1+1
- **Students with IEPs:** 79
- **Staff:**
 - 9 Special Education Teachers
 - 2 School Counselors
 - 0.5 School Psychologist
 - 1.0 School Social Worker (30 Students)
 - 1.0 Speech/Language Pathologist (27 Students)
 - 0.3 Occupational Therapist (9 Students)
 - 0.15 Physical Therapist (5 Student)
- **Changes in Special Education for '23-'24**
 - A 7th grade 15:1 Math section will be added. 15:1 Math will not be added at 8th grade because there was only 1 student that required it. We will use program modifications and accommodations to meet their needs. The 15:1 Math at the 6th grade level will be maintained.
 - The number of special education teachers at the MS will remain the same with some grade-level shifts.
 - Decrease SLP to 0.8 based on student needs and to balance SLP caseloads across the district.

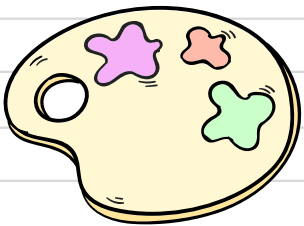


Lewiston Porter Intermediate Education Center Special Education Programs and Staff

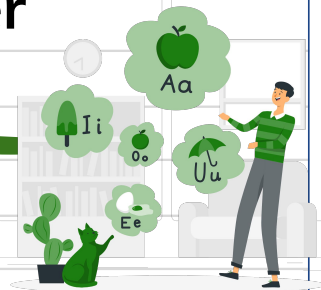


- **Programs:** Integrated Co-Teaching (ICT), Consultant Teacher (CT), and 12:1+1
- **Students with IEPs:** 63
- **Staff:**
 - 7 Special Education Teachers
 - 0.8 School Psychologist
 - 1.0 School Social Worker (20 Students)
 - 1.0 Speech/Language Pathologist (42 Students)
 - 0.7 Occupational Therapist (22 Students)
 - 0.3 Physical Therapist (12 Student)
- **Changes in Special Education for '23-'24**
 - No major programming changes at the IEC. The number of special education teachers will remain the same.

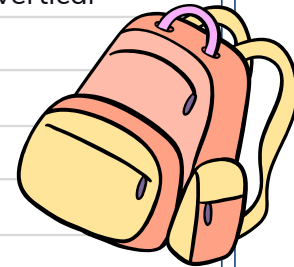
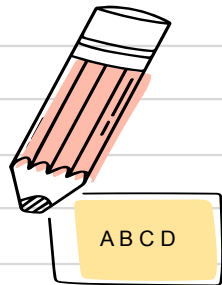




Lewiston Porter Primary Education Center Special Education Programs and Staff



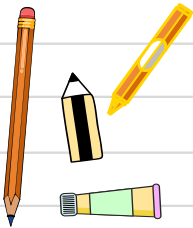
- **Current Programs:** Integrated Co-Teaching (ICT), Resource Room (RR) and 8:1+1
- **Students with IEPs:** 43
- **Staff:**
 - 4 Special Education Teachers
 - 1 School Psychologist
 - 1.0 School Social Worker (14 Students)
 - 1.0 Speech/Language Pathologist (30 Students)
 - 0.97 Occupational Therapist (25 Students)
 - 0.5 Physical Therapist (14 Student)
- **Changes in Special Education for '23-'24**
 - The PEC will have a 12:1+1 next year instead of an 8:1+1 based on student needs and to create vertical align of programs across the district.
 - Our current 8:1+1 program has 5 students. 3 will remain in district.
 - We have 0 incoming Kdg. students that would require an 8:1+1 placement.
 - The PEC 12:1+1 will have ~10 students.
 - We have 5 incoming Kdg. students that will require a 12:1+1 placement.
 - The number of special education teachers will stay the same.



A girl with pigtails is sitting on a light blue circular mat. She is holding a block with the letter 'A'. Around her are several alphabet blocks: 'A', 'B', 'C', 'D', 'E', 'F', 'G', 'H', 'I', 'J', 'K', 'L', 'M', 'N', 'O', 'P', 'Q', 'R', 'S', 'T', 'U', 'V', 'W', 'X', 'Y', 'Z'. There are also cards with the letter 'A' and the word 'apple' on them. A book is open on the floor next to her.


-
- A pink notepad with a blue pencil and a blue squiggle. The notepad is tilted and has a blue line at the top. The pencil is blue with a pink eraser and a blue squiggle is drawn on the notepad.

- We plan on bringing 2 Students back from BOCES
- We have 2 additional Students that may require a BOCES placement
- BOCES will not be offering ESY for students not placed at BOCES during the regular school year. Lynn and Michael will work with Special Education staff and Building Principals develop a Summer School program for students with IEPs that qualify for ESY (due to substantial regression compared to peers).



Lewiston Porter Special Education

Students placed at NYS Approved Private Schools



- **Schools:** Aspire, Buffalo Hearing and Speech, Beyond Learning (Formerly Cantalician), CHC Learning Center, Gateway-Longview, H. G. Lewis, Summit
- **Current Programs:** 6:1+1, 6:1+3, 8:1+2, 8:1+3, 12:1+4, and 12:1+(3:1)
- **Students with IEPs:** 16
- **Related Services:**
 - Speech/Language Therapy - 13 Students
 - Occupational Therapy - 14 Students
 - Physical Therapy - 8 Students
 - Counseling - 4 Students
 - Vision Services - 3 Students
 - Adapted Physical Education - 8 Student
 - Skilled Nursing Services - 1 Student
 - Music Therapy - 1 Student
- **Changes for '23-'24**
 - We plan on bringing 2 Students back to district
 - We have 1 Student currently in a district program that may require an out-of-district placement
 - We have 5 incoming Kdg. Students whose needs are too severe for a district placement.





Lewiston Porter Special Education Non-Public Schools within District



- **Students with IEPs by School:**

- St. Peter's - 8 Students
- Sacred Heart - 2 Students
- Stella Niagara - 1 Student

- **Staff:** 1 Special Education Teacher at St. Peter's

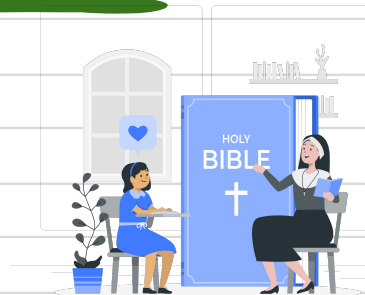
- **Current Programs:** Consultant Teacher (CT), Resource Room (RR), and Related Services Only (RSO)

- **Related Services:**

- Speech/Language Therapy - 5 Students
- Occupational Therapy - 3 Students

- **Changes for '23-'24**

- The Special Education Teacher's schedule will be arranged more strategically to allow her to support the PEC for ~2 hours per day.
- District Related Service Providers will provide services for all non-public students.
 - Currently we only have a SLP that provides ST for some of St. Peter's students; we contract out for the remaining services
 - This will fit into the district Related Service providers schedules without hiring additional staff and will save the district over \$20,000





Lewiston Porter Special Education Homeschooled Students

9

- **Students:** 10
- **Related Services:**
 - Speech/Language Therapy - 3 Students
 - Occupational Therapy - 3 Students
 - Vision Services - 3 Students
- **Changes for '23-'24**
 - District Related Service Providers will provide services for all homeschooled students that receive ST, OT or PT.
 - This will fit into the district Related Service providers schedules without hiring additional staff and will save the district over \$10,000





Lewiston Porter Special Education

Pre-K Students

9

- **Students:** 68
- **Center Based Programs:** Empower (2 Students), Summit (4 Students), HG Lewis (1 Student), Bornhava (1 Students) & Bloom Creative Arts (1 Student)
- **Special Education Itinerant Services:** 5 Students
- **Preschool Itinerant Services Only:** 54

- **Related Services:**

- Speech/Language Therapy - 29 Students
- Occupational Therapy - 15 Students
- Physical Therapy - 2 Students
- Counseling - 1 Student
- Aquatic Therapy - 1 Student

- **Changes for '23-'24**

- We are considering adding a Special Class in an Integrated Setting (SCIS) to our Universal Pre-Kindergarten (UPK) program in order to better service our students that we are unable to find a placement for, and to increase revenue. NYS provides additional funding for district operated SCIS classes.

PRESCHOOL



Lewiston Porter Special Education - Grants

9

611 Grant - \$549,031

Professional Salaries \$432,649	Support Staff Salaries \$30,000	Purchased Services \$63,590	Supplies and Materials \$3,130	Travel Expenses \$1,500	Employee Benefits \$18,162
5 Special Education Teachers	1 Academic Intervention Aide	SEDCAR Flow Through 1 School Psychologist Consultation	School Psychologist Test Materials	PCA for 1 Student for an Overnight Field Trip	Health Insurance

619 Grant - \$18,670

Support Staff Salaries - \$6,214	Purchased Services - \$12,456
0.25 Special Education Clerical	SEDCAR Flow Through - Various Local Agencies24 @ \$519

UPK Grant - \$423,507

Professional Salaries \$26,690	Purchased Services \$389,298	Supplies and Materials \$7,519
0.2 Principal	Comprehensive PreK Program from CBO	<ul style="list-style-type: none"> - Second Step - Brigance - Scholastic Kids Subscription - Craft Supplies - Student Cots



Thanks!

Do you have any questions?

lhewitt@lew-port.com
716-238-1217